



### BLF-Elektra

Sample ID: G1A0245-01

Matrix: Industrial Hemp

Test ID: 5009843

Source ID:

Date Sampled: 01/15/21

Date Accepted: 01/15/21

C Oregon LLC

### Results at a Glance

Total THC : 0.5399 %

Total CBD : 11.74 %

Total CBG : 0.5712 %

Pesticides : PASS

Microbials : PASS

METALS : PASS



*Russell Kuhfeld*

Russell Kuhfeld  
Quality Officer - 1/25/2021

All QC samples met acceptance criteria of the method; data available upon request. These results relate only to the sample included on this report. The report may not be reproduced except in full, without the written permission of Green Leaf Lab.

This is for informational testing and is not compliance testing. Lab results apply to the sample as received.



### BLF-Elektra

Sample ID: G1A0245-01

Matrix: Industrial Hemp

Test ID: 5009843

Source ID:

Date Sampled: 01/15/21

Date Accepted: 01/15/21

C Oregon LLC

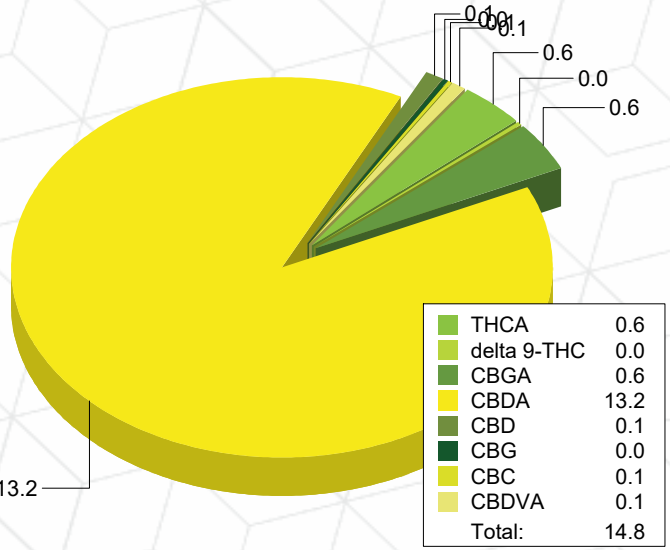
### Potency Analysis

Date/Time Extracted: 01/22/21 09:23

Analysis Method/SOP: 215

Batch Identification: 2104041

Cannabinoids	LOQ (%)	% by Wt.	mg/g	Cannabinoids Profile
Total THC	0.009080	0.5399	5.399	
Total CBD	0.008300	11.74	117.4	
Total CBG	7.900E-4	0.5712	5.712	
THCA	0.002920	0.5776	5.776	
delta 9-THC	0.009080	0.03337	0.3337	
THCV	0.005055	< LOQ	< LOQ	
THCVA	0.001885	< LOQ	< LOQ	
CBD	0.006220	0.1440	1.44	
CBDA	0.008300	13.22	132.2	
CBDV	0.005000	< LOQ	< LOQ	
CBDVA	0.001640	0.1054	1.054	
CBN	0.002990	< LOQ	< LOQ	
CBG	7.900E-4	0.04304	0.4304	
CBGA	7.900E-4	0.6015	6.015	
CBC	0.008965	0.06955	0.6955	



Total THC = delta 9-THC + (THCA \* 0.877)

Total CBD = CBD + (CBDA \* 0.877)

Total CBG = CBG + (CBGA \* 0.878)

LOQ=Limit of Quantification, the lowest measurable concentration of an analyte.



*Russell Kuhfeld*

Russell Kuhfeld  
Quality Officer - 1/25/2021

All QC samples met acceptance criteria of the method; data available upon request. These results relate only to the sample included on this report. The report may not be reproduced except in full, without the written permission of Green Leaf Lab.

This is for informational testing and is not compliance testing. Lab results apply to the sample as received.



### BLF-Elektra

Sample ID: G1A0245-01

Matrix: Industrial Hemp

Test ID: 5009843

Source ID:

Date Sampled: 01/15/21

Date Accepted: 01/15/21

C Oregon LLC

### Pesticide Analysis in ppm

Date/Time Extracted: 01/20/21 14:16

Analysis Method/SOP: 203

Analyte	Result	Action Level	LOD	LOQ	Units	Analyte	Result	Action Level	LOD	LOQ	Units
Abamectin	< LOQ	0.5		0.04	ppm	Acephate	< LOQ	0.4		0.04	ppm
Acequinocyl	< LOQ	2		0.04	ppm	Acetamiprid	< LOQ	0.2		0.04	ppm
Aldicarb	< LOQ	0.4		0.04	ppm	Azoxystrobin	< LOQ	0.2		0.04	ppm
Bifenazate	< LOQ	0.2		0.04	ppm	Bifenthrin	< LOQ	0.2		0.04	ppm
Boscalid	< LOQ	0.4		0.04	ppm	Carbaryl	< LOQ	0.2		0.04	ppm
Carbofuran	< LOQ	0.2		0.04	ppm	Chlorantraniliprole	< LOQ	0.2		0.04	ppm
Chlorfenapyr	< LOQ	1		0.04	ppm	Chlorpyrifos	< LOQ	0.2		0.04	ppm
Clofentezine	< LOQ	0.2		0.04	ppm	Cyfluthrin	< LOQ	1		0.04	ppm
Cypermethrin	< LOQ	1		0.04	ppm	Daminozide	< LOQ	1		0.04	ppm
DDVP (Dichlorvos)	< LOQ	1		0.04	ppm	Diazinon	< LOQ	0.2		0.04	ppm
Dimethoate	< LOQ	0.2		0.04	ppm	Ethoprophos	< LOQ	0.2		0.04	ppm
Etofenprox	< LOQ	0.4		0.04	ppm	Etoxazole	< LOQ	0.2		0.04	ppm
Fenoxycarb	< LOQ	0.2		0.04	ppm	Fenpyroximate	< LOQ	0.4		0.04	ppm
Fipronil	< LOQ	0.4		0.04	ppm	Fonicamid	< LOQ	1		0.04	ppm
Fludioxonil	< LOQ	0.4		0.04	ppm	Hexythiazox	< LOQ	1		0.04	ppm
Imazalil	< LOQ	0.2		0.04	ppm	Imidacloprid	< LOQ	0.4		0.04	ppm
Kresoxim-methyl	< LOQ	0.4		0.04	ppm	Malathion	< LOQ	0.2		0.04	ppm
Metalaxyl	< LOQ	0.2		0.04	ppm	Methiocarb	< LOQ	0.2		0.04	ppm
Methomyl	< LOQ	0.4		0.04	ppm	Methyl parathion	< LOQ	0.2		0.04	ppm
MGK-264	< LOQ	0.2		0.04	ppm	Myclobutanil	< LOQ	0.2		0.04	ppm
Naled	< LOQ	0.5		0.04	ppm	Oxamyl	< LOQ	1		0.04	ppm
Paclobutrazol	< LOQ	0.4		0.04	ppm	Permethrins	< LOQ	0.2		0.04	ppm
Phosmet	< LOQ	0.2		0.04	ppm	Piperonyl butoxide	< LOQ	2		0.1	ppm
Prallethrin	< LOQ	0.2		0.04	ppm	Propiconazole	< LOQ	0.4		0.04	ppm
Propoxur	< LOQ	0.2		0.04	ppm	Pyrethrins	< LOQ	1		0.1	ppm
Pyridaben	< LOQ	0.2		0.04	ppm	Spinosad	< LOQ	0.2		0.04	ppm
Spiromesifen	< LOQ	0.2		0.04	ppm	Spirotetramat	< LOQ	0.2		0.04	ppm
Spiroxamine	< LOQ	0.4		0.04	ppm	Tebuconazole	< LOQ	0.4		0.04	ppm
Thiacloprid	< LOQ	0.2		0.04	ppm	Thiamethoxam	< LOQ	0.2		0.04	ppm
Trifloxystrobin	< LOQ	0.2		0.04	ppm						

ND - Compound not detected

Results above the Action Level fail state testing requirements and will be highlighted **Red**.



*Russell Kuhfeld*

Russell Kuhfeld  
Quality Officer - 1/25/2021

All QC samples met acceptance criteria of the method; data available upon request. These results relate only to the sample included on this report. The report may not be reproduced except in full, without the written permission of Green Leaf Lab.

This is for informational testing and is not compliance testing. Lab results apply to the sample as received.



### BLF-Elektra

Sample ID: G1A0245-01

Matrix: Industrial Hemp

Test ID: 5009843

Source ID:

Date Sampled: 01/15/21

Date Accepted: 01/15/21

C Oregon LLC

### Metals Analysis by ICPMS

Date/Time Extracted: 01/21/21 12:01

Analysis Method/SOP: HM-001

Analyte	Result	LOD	LOQ	Units
Arsenic	< LOQ	0.0110	0.0500	ug/g
Cadmium	< LOQ	0.00100	0.0500	ug/g
Lead	< LOQ	0.00150	0.0500	ug/g
Mercury	< LOQ	0.00350	0.0100	ug/g

Metal analyses are not accredited to ORELAP TNI 2009 Quality Standards.  
<LOQ - Results below the Limit of Quantitation - Compound not detected

Analysis Subcontracted to Green Leaf Labs - SCCA.



ISO 17025  
ACCREDITED  
LABORATORY

*Russell Kuhfeld*

Russell Kuhfeld  
Quality Officer - 1/25/2021

All QC samples met acceptance criteria of the method; data available upon request. These results relate only to the sample included on this report. The report may not be reproduced except in full, without the written permission of Green Leaf Lab.

This is for informational testing and is not compliance testing. Lab results apply to the sample as received.



### BLF-Elektra

Sample ID: G1A0245-01

Matrix: Industrial Hemp

Test ID: 5009843

Source ID:

Date Sampled: 01/15/21

Date Accepted: 01/15/21

C Oregon LLC

### Microbials by PCR

Date/Time Extracted: 01/21/21 11:24

Analysis Method/SOP: MI-301

Analyte	Result	LOD	LOQ	Units	
Aspergillus Flavus	Pass	0.00	0.00	CFU/g	No detection in 1 gram
Aspergillus Fumigatus	Pass	0.00	0.00	CFU/g	No detection in 1 gram
Aspergillus Niger	Pass	0.00	0.00	CFU/g	No detection in 1 gram
Aspergillus Terreus	Pass	0.00	0.00	CFU/g	No detection in 1 gram
Escherichia Coli	Pass	0.00	0.00	CFU/g	No detection in 1 gram
Salmonella	Pass	0.00	0.00	CFU/g	No detection in 1 gram

Analysis Subcontracted to Green Leaf Labs - SCCA.



ISO 17025  
ACCREDITED  
LABORATORY

*Russell Kuhfeld*

Russell Kuhfeld  
Quality Officer - 1/25/2021

All QC samples met acceptance criteria of the method; data available upon request. These results relate only to the sample included on this report. The report may not be reproduced except in full, without the written permission of Green Leaf Lab.

This is for informational testing and is not compliance testing. Lab results apply to the sample as received.



### Quality Control Potency

Batch: 2104041 - 215-Hemp

Blank(2104041-BLK1)						
Analyte	Result	LOQ	Units	%Recovery Limits	Extracted	Analyzed
THCA	< LOQ	0.01168	%		01/22/21 09:23	01/22/21 22:41
delta 9-THC	< LOQ	0.03632	%		01/22/21 09:23	01/22/21 22:41
THCV	< LOQ	0.02022	%		01/22/21 09:23	01/22/21 22:41
THCVA	< LOQ	0.007540	%		01/22/21 09:23	01/22/21 22:41
CBD	< LOQ	0.006220	%		01/22/21 09:23	01/22/21 22:41
CBDA	< LOQ	0.008300	%		01/22/21 09:23	01/22/21 22:41
CBDV	< LOQ	0.02000	%		01/22/21 09:23	01/22/21 22:41
CBDVA	< LOQ	0.006560	%		01/22/21 09:23	01/22/21 22:41
CBN	< LOQ	0.01196	%		01/22/21 09:23	01/22/21 22:41
CBG	< LOQ	0.003160	%		01/22/21 09:23	01/22/21 22:41
CBGA	< LOQ	0.003160	%		01/22/21 09:23	01/22/21 22:41
CBC	< LOQ	0.03586	%		01/22/21 09:23	01/22/21 22:41

Reference(2104041-SRM1)						
Analyte	% Recovery	LOQ	Units	%Recovery Limits	Extracted	Analyzed
delta 9-THC	96.2	0.009080	%	80-120	01/22/21 09:23	01/22/21 23:03
CBD	99.8	0.001555	%	80-120	01/22/21 09:23	01/22/21 23:03

### Pesticide Analysis

Batch: 2104025 - 203

Blank(2104025-BLK1)						
Analyte	Result	LOQ	Units	%Recovery Limits	Extracted	Analyzed
Abamectin	< LOQ	0.04	ppm		01/20/21 14:16	01/20/21 19:20
DDVP (Dichlorvos)	< LOQ	0.04	ppm		01/20/21 14:16	01/20/21 19:20
Acephate	< LOQ	0.04	ppm		01/20/21 14:16	01/20/21 19:20
Acequinocyl	< LOQ	0.04	ppm		01/20/21 14:16	01/20/21 19:20
Acetamiprid	< LOQ	0.04	ppm		01/20/21 14:16	01/20/21 19:20
Aldicarb	< LOQ	0.04	ppm		01/20/21 14:16	01/20/21 19:20
Azoxystrobin	< LOQ	0.04	ppm		01/20/21 14:16	01/20/21 19:20
Bifenazate	< LOQ	0.04	ppm		01/20/21 14:16	01/20/21 19:20
Bifenthrin	< LOQ	0.04	ppm		01/20/21 14:16	01/20/21 19:20
Boscalid	< LOQ	0.04	ppm		01/20/21 14:16	01/20/21 18:15
Carbaryl	< LOQ	0.04	ppm		01/20/21 14:16	01/20/21 19:20
Carbofuran	< LOQ	0.04	ppm		01/20/21 14:16	01/20/21 19:20
Chlorantraniliprole	< LOQ	0.04	ppm		01/20/21 14:16	01/20/21 19:20
Chlorfenapyr	< LOQ	0.04	ppm		01/20/21 14:16	01/20/21 18:15
Chlorpyrifos	< LOQ	0.04	ppm		01/20/21 14:16	01/20/21 19:20
Clofentezine	< LOQ	0.04	ppm		01/20/21 14:16	01/20/21 19:20
Cyfluthrin	< LOQ	0.04	ppm		01/20/21 14:16	01/20/21 18:15



*Russell Kuhfeld*

Russell Kuhfeld  
Quality Officer - 1/25/2021

All QC samples met acceptance criteria of the method; data available upon request. These results relate only to the sample included on this report. The report may not be reproduced except in full, without the written permission of Green Leaf Lab.

This is for informational testing and is not compliance testing. Lab results apply to the sample as received.





### Quality Control Pesticide Analysis (Continued)

Batch: 2104025 - 203 (Continued)

Blank(2104025-BLK1)						
Analyte	Result	LOQ	Units	%Recovery Limits	Extracted	Analyzed
Cypermethrin	< LOQ	0.04	ppm		01/20/21 14:16	01/20/21 18:15
Daminozide	< LOQ	0.04	ppm		01/20/21 14:16	01/20/21 19:20
Diazinon	< LOQ	0.04	ppm		01/20/21 14:16	01/20/21 19:20
Dimethoate	< LOQ	0.04	ppm		01/20/21 14:16	01/20/21 19:20
Ethoprophos	< LOQ	0.04	ppm		01/20/21 14:16	01/20/21 19:20
Etofenprox	< LOQ	0.04	ppm		01/20/21 14:16	01/20/21 19:20
Etoxazole	< LOQ	0.04	ppm		01/20/21 14:16	01/20/21 19:20
Fenoxycarb	< LOQ	0.04	ppm		01/20/21 14:16	01/20/21 19:20
Fenpyroximate	< LOQ	0.04	ppm		01/20/21 14:16	01/20/21 19:20
Flonicamid	< LOQ	0.04	ppm		01/20/21 14:16	01/20/21 19:20
Fipronil	< LOQ	0.04	ppm		01/20/21 14:16	01/20/21 18:15
Hexythiazox	< LOQ	0.04	ppm		01/20/21 14:16	01/20/21 19:20
Fludioxonil	< LOQ	0.04	ppm		01/20/21 14:16	01/20/21 18:15
Imazalil	< LOQ	0.04	ppm		01/20/21 14:16	01/20/21 19:20
Imidacloprid	< LOQ	0.04	ppm		01/20/21 14:16	01/20/21 19:20
Metalaxyl	< LOQ	0.04	ppm		01/20/21 14:16	01/20/21 19:20
Kresoxim-methyl	< LOQ	0.04	ppm		01/20/21 14:16	01/20/21 18:15
Methiocarb	< LOQ	0.04	ppm		01/20/21 14:16	01/20/21 19:20
Malathion	< LOQ	0.04	ppm		01/20/21 14:16	01/20/21 18:15
Methomyl	< LOQ	0.04	ppm		01/20/21 14:16	01/20/21 19:20
Myclobutanil	< LOQ	0.04	ppm		01/20/21 14:16	01/20/21 19:20
Naled	< LOQ	0.04	ppm		01/20/21 14:16	01/20/21 19:20
Methyl parathion	< LOQ	0.04	ppm		01/20/21 14:16	01/20/21 18:15
Oxamyl	< LOQ	0.04	ppm		01/20/21 14:16	01/20/21 19:20
MGK-264	< LOQ	0.04	ppm		01/20/21 14:16	01/20/21 18:15
Paclobutrazol	< LOQ	0.04	ppm		01/20/21 14:16	01/20/21 19:20
Phosmet	< LOQ	0.04	ppm		01/20/21 14:16	01/20/21 19:20
Piperonyl butoxide	< LOQ	0.1	ppm		01/20/21 14:16	01/20/21 19:20
Permethrins	< LOQ	0.04	ppm		01/20/21 14:16	01/20/21 18:15
Prallethrin	< LOQ	0.04	ppm		01/20/21 14:16	01/20/21 19:20
Propiconazole	< LOQ	0.04	ppm		01/20/21 14:16	01/20/21 18:15
Propoxur	< LOQ	0.04	ppm		01/20/21 14:16	01/20/21 19:20
Pyrethrins	< LOQ	0.1	ppm		01/20/21 14:16	01/20/21 19:20
Pyridaben	< LOQ	0.04	ppm		01/20/21 14:16	01/20/21 19:20
Spinosad	< LOQ	0.04	ppm		01/20/21 14:16	01/20/21 19:20
Spiromesifen	< LOQ	0.04	ppm		01/20/21 14:16	01/20/21 19:20
Spirotetramat	< LOQ	0.04	ppm		01/20/21 14:16	01/20/21 19:20
Spiroxamine	< LOQ	0.04	ppm		01/20/21 14:16	01/20/21 19:20



*Russell Kuhfeld*

Russell Kuhfeld  
Quality Officer - 1/25/2021

All QC samples met acceptance criteria of the method; data available upon request. These results relate only to the sample included on this report. The report may not be reproduced except in full, without the written permission of Green Leaf Lab.

This is for informational testing and is not compliance testing. Lab results apply to the sample as received.



### Quality Control Pesticide Analysis (Continued)

Batch: 2104025 - 203 (Continued)

Blank(2104025-BLK1)						
Analyte	Result	LOQ	Units	%Recovery Limits	Extracted	Analyzed
Tebuconazole	< LOQ	0.04	ppm		01/20/21 14:16	01/20/21 19:20
Thiacloprid	< LOQ	0.04	ppm		01/20/21 14:16	01/20/21 19:20
Thiamethoxam	< LOQ	0.04	ppm		01/20/21 14:16	01/20/21 19:20
Trifloxystrobin	< LOQ	0.04	ppm		01/20/21 14:16	01/20/21 19:20

LCS(2104025-BS1)						
Analyte	% Recovery	LOQ	Units	%Recovery Limits	Extracted	Analyzed
Abamectin	96.2	0.04	ppm	70-130	01/20/21 14:16	01/20/21 19:43
DDVP (Dichlorvos)	106	0.04	ppm	70-130	01/20/21 14:16	01/20/21 19:43
Acephate	106	0.04	ppm	70-130	01/20/21 14:16	01/20/21 19:43
Acequinocyl	99.4	0.04	ppm	52-97	01/20/21 14:16	01/20/21 19:43
Acetamiprid	106	0.04	ppm	70-130	01/20/21 14:16	01/20/21 19:43
Aldicarb	110	0.04	ppm	70-130	01/20/21 14:16	01/20/21 19:43
Azoxystrobin	112	0.04	ppm	70-130	01/20/21 14:16	01/20/21 19:43
Bifenazate	111	0.04	ppm	70-130	01/20/21 14:16	01/20/21 19:43
Bifenthrin	127	0.04	ppm	70-130	01/20/21 14:16	01/20/21 19:43
Boscalid	75.1	0.04	ppm	70-130	01/20/21 14:16	01/20/21 18:38
Carbaryl	106	0.04	ppm	70-130	01/20/21 14:16	01/20/21 19:43
Carbofuran	108	0.04	ppm	70-130	01/20/21 14:16	01/20/21 19:43
Chlorantraniliprole	103	0.04	ppm	70-130	01/20/21 14:16	01/20/21 19:43
Chlorfenapyr	89.7	0.04	ppm	70-130	01/20/21 14:16	01/20/21 18:38
Chlorpyrifos	107	0.04	ppm	70-130	01/20/21 14:16	01/20/21 19:43
Clofentezine	105	0.04	ppm	14.4-62.3	01/20/21 14:16	01/20/21 19:43
Cyfluthrin	78.5	0.04	ppm	70-130	01/20/21 14:16	01/20/21 18:38
Cypermethrin	85.0	0.04	ppm	70-130	01/20/21 14:16	01/20/21 18:38
Daminozide	6.36	0.04	ppm	0-100	01/20/21 14:16	01/20/21 19:43
Diazinon	111	0.04	ppm	70-130	01/20/21 14:16	01/20/21 19:43
Dimethoate	105	0.04	ppm	70-130	01/20/21 14:16	01/20/21 19:43
Ethoprophos	107	0.04	ppm	70-130	01/20/21 14:16	01/20/21 19:43
Etofenprox	102	0.04	ppm	70-130	01/20/21 14:16	01/20/21 19:43
Etoxazole	107	0.04	ppm	70-130	01/20/21 14:16	01/20/21 19:43
Fenoxycarb	113	0.04	ppm	70-130	01/20/21 14:16	01/20/21 19:43
Fenpyroximate	110	0.04	ppm	50-100	01/20/21 14:16	01/20/21 19:43
Flonicamid	101	0.04	ppm	70-130	01/20/21 14:16	01/20/21 19:43
Fipronil	85.3	0.04	ppm	70-130	01/20/21 14:16	01/20/21 18:38
Hexythiazox	112	0.04	ppm	80-120	01/20/21 14:16	01/20/21 19:43
Fludioxonil	72.9	0.04	ppm	70-130	01/20/21 14:16	01/20/21 18:38
Imazalil	105	0.04	ppm	58-96.4	01/20/21 14:16	01/20/21 19:43
Imidacloprid	109	0.04	ppm	70-130	01/20/21 14:16	01/20/21 19:43



*Russell Kuhfeld*

Russell Kuhfeld  
Quality Officer - 1/25/2021

All QC samples met acceptance criteria of the method; data available upon request. These results relate only to the sample included on this report. The report may not be reproduced except in full, without the written permission of Green Leaf Lab.

This is for informational testing and is not compliance testing. Lab results apply to the sample as received.





### Quality Control Pesticide Analysis (Continued)

Batch: 2104025 - 203 (Continued)

LCS(2104025-BS1)						
Analyte	% Recovery	LOQ	Units	%Recovery Limits	Extracted	Analyzed
Metalaxyl	109	0.04	ppm	70-130	01/20/21 14:16	01/20/21 19:43
Kresoxim-methyl	101	0.04	ppm	70-130	01/20/21 14:16	01/20/21 18:38
Methiocarb	111	0.04	ppm	70-130	01/20/21 14:16	01/20/21 19:43
Malathion	91.9	0.04	ppm	70-130	01/20/21 14:16	01/20/21 18:38
Methomyl	99.4	0.04	ppm	70-130	01/20/21 14:16	01/20/21 19:43
Myclobutanil	116	0.04	ppm	70-130	01/20/21 14:16	01/20/21 19:43
Naled	110	0.04	ppm	36-93	01/20/21 14:16	01/20/21 19:43
Methyl parathion	62.1	0.04	ppm	70-130	01/20/21 14:16	01/20/21 18:38
Oxamyl	118	0.04	ppm	70-130	01/20/21 14:16	01/20/21 19:43
MGK-264	98.9	0.04	ppm	70-130	01/20/21 14:16	01/20/21 18:38
Paclobutrazol	117	0.04	ppm	70-130	01/20/21 14:16	01/20/21 19:43
Phosmet	108	0.04	ppm	70-130	01/20/21 14:16	01/20/21 19:43
Piperonyl butoxide	104	0.1	ppm	70-130	01/20/21 14:16	01/20/21 19:43
Permethrins	82.6	0.04	ppm	70-130	01/20/21 14:16	01/20/21 18:38
Prallethrin	106	0.04	ppm	70-130	01/20/21 14:16	01/20/21 19:43
Propiconazole	80.1	0.04	ppm	70-130	01/20/21 14:16	01/20/21 18:38
Propoxur	105	0.04	ppm	70-130	01/20/21 14:16	01/20/21 19:43
Pyrethrins	64.2	0.1	ppm	70-130	01/20/21 14:16	01/20/21 19:43
Pyridaben	110	0.04	ppm	70-130	01/20/21 14:16	01/20/21 19:43
Spinosad	117	0.04	ppm	45-114	01/20/21 14:16	01/20/21 19:43
Spiromesifen	108	0.04	ppm	70-130	01/20/21 14:16	01/20/21 19:43
Spirotetramat	105	0.04	ppm	70-130	01/20/21 14:16	01/20/21 19:43
Spiroxamine	115	0.04	ppm	55-95	01/20/21 14:16	01/20/21 19:43
Tebuconazole	108	0.04	ppm	70-130	01/20/21 14:16	01/20/21 19:43
Thiacloprid	115	0.04	ppm	70-130	01/20/21 14:16	01/20/21 19:43
Thiamethoxam	121	0.04	ppm	70-130	01/20/21 14:16	01/20/21 19:43
Trifloxystrobin	104	0.04	ppm	70-130	01/20/21 14:16	01/20/21 19:43



*Russell Kuhfeld*

Russell Kuhfeld  
Quality Officer - 1/25/2021

All QC samples met acceptance criteria of the method; data available upon request. These results relate only to the sample included on this report. The report may not be reproduced except in full, without the written permission of Green Leaf Lab.

This is for informational testing and is not compliance testing. Lab results apply to the sample as received.



### Quality Control Microbials

#### Batch: 2104038 - Microbials

Blank(2104038-BLK1)						
Analyte	Result	LOQ	Units	%Recovery Limits	Extracted	Analyzed
Salmonella	Pass	0.00	CFU/g		01/21/21 11:23	01/22/21 12:47
Escherichia Coli	Pass	0.00	CFU/g		01/21/21 11:23	01/22/21 12:47

LCS(2104038-BS1)						
Analyte	% Recovery	LOQ	Units	%Recovery Limits	Extracted	Analyzed
Salmonella		0.00	CFU/g	0-200	01/21/21 11:23	01/22/21 12:47
Escherichia Coli		0.00	CFU/g	0-200	01/21/21 11:23	01/22/21 12:47

#### Batch: 2104039 - Microbials

Blank(2104039-BLK1)						
Analyte	Result	LOQ	Units	%Recovery Limits	Extracted	Analyzed
Aspergillus Fumigatus	Pass	0.00	CFU/g		01/21/21 11:24	01/22/21 16:47
Aspergillus Terreus	Pass	0.00	CFU/g		01/21/21 11:24	01/22/21 16:47
Aspergillus Niger	Pass	0.00	CFU/g		01/21/21 11:24	01/22/21 16:47
Aspergillus Flavus	Pass	0.00	CFU/g		01/21/21 11:24	01/22/21 16:47

LCS(2104039-BS1)						
Analyte	% Recovery	LOQ	Units	%Recovery Limits	Extracted	Analyzed
Aspergillus Fumigatus		0.00	CFU/g	0-200	01/21/21 11:24	01/22/21 16:47
Aspergillus Terreus		0.00	CFU/g	0-200	01/21/21 11:24	01/22/21 16:47
Aspergillus Niger		0.00	CFU/g	0-200	01/21/21 11:24	01/22/21 16:47
Aspergillus Flavus		0.00	CFU/g	0-200	01/21/21 11:24	01/22/21 16:47

#### Batch: 2104043 - Metals

Blank(2104043-BLK1)						
Analyte	Result	LOQ	Units	%Recovery Limits	Extracted	Analyzed
Cadmium	< LOQ	0.0500	ug/g		01/21/21 12:01	01/22/21 15:04
Lead	< LOQ	0.0500	ug/g		01/21/21 12:01	01/22/21 15:04
Arsenic	< LOQ	0.0500	ug/g		01/21/21 12:01	01/22/21 15:04
Mercury	< LOQ	0.0100	ug/g		01/21/21 12:01	01/22/21 15:04

LCS(2104043-BS1)						
Analyte	% Recovery	LOQ	Units	%Recovery Limits	Extracted	Analyzed
Cadmium	96.4	0.0500	ug/g	70-130	01/21/21 12:01	01/22/21 15:06
Lead	95.4	0.0500	ug/g	70-130	01/21/21 12:01	01/22/21 15:06
Arsenic	95.4	0.0500	ug/g	70-130	01/21/21 12:01	01/22/21 15:06
Mercury	103	0.0100	ug/g	70-130	01/21/21 12:01	01/22/21 15:06



*Russell Kuhfeld*

Russell Kuhfeld  
Quality Officer - 1/25/2021

All QC samples met acceptance criteria of the method; data available upon request. These results relate only to the sample included on this report. The report may not be reproduced except in full, without the written permission of Green Leaf Lab.

This is for informational testing and is not compliance testing. Lab results apply to the sample as received.